



# The WildTimes



**NEW Zoo & Adventure Park**

## Meet the Zookeeper: Drew

**When did you start working at the NEW Zoo?**

In August of 2013.

**How long have you been a zookeeper?**

For six years (I worked for four years at another zoo).

**How did you get into the zookeeping business?**

Back in high school, I job-shadowed a zookeeper and had a great time! I ended up getting a part-time, intro-level zookeeping position at the zoo shortly afterwards. I fell in love with the job, changed my college major, and pursued a career in zookeeping.

**What is your favorite part about working at a zoo?**

My favorite part is teaching people about the animals. I love interpreting animal behavior for guests and using that knowledge to help them make a connection to wild-life.

**What part of your day do you least look forward to?**

Depends on the day, but in winter, dealing with frozen locks in the morning is the worst! The rest of the year, I hate going to work in the

rain!

**What is the hardest part of your job?**

The hardest part of being a keeper is saying goodbye to an animal that is passing away. Spending every day with the animals, you build very close relationships, and it is always sad to see them go.

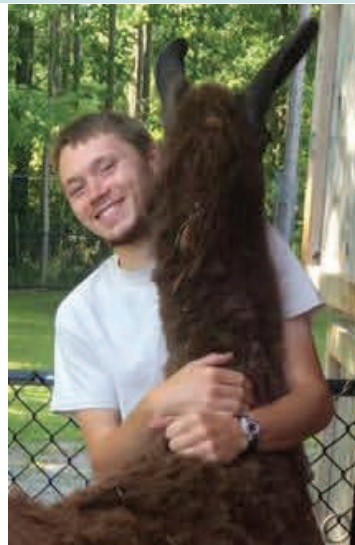
**Which is your favorite animal at the zoo and why?**

My favorite is Eliza the bobcat (*pictured, below right*) She has a very special personality, and I think she makes a wonderful ambassador for her wild counterparts. People seem to really connect with her when she's out interacting with guests. Also, she's super cute!

**If you could choose any animal to add to the zoo's collection, what would it be and why?**

A wolverine. I think it's an animal that most people know very little about. They have many fascinating adaptations that would be really cool to teach people about.

**What do you wish more**



*Drew is pictured above with llama, Sinatra, after his shearing this past summer.*

**people understood about your job?**

I wish more people understood that most zookeepers do have a college degree and that the job is so much more than picking up poo.



**Issue 93  
December 2015**

### Inside this Issue...

Zoo Pass Memberships	2
Animal Collection Report	3
N.E.W. Zoological Society	4
From the Director	5
Calendar of Events	6

**The December 2015 Paws & Claws Gift Shop Special Is...**

**50% off on the lowest-marked prices on all CLOTHING items**

**It's not too late to finish your holiday shopping for everyone left on your list!**

**Purchase gift Zoo Pass Memberships!**

**Orders received by December 15th should be received by Christmas.**

*Orders placed after Dec 15th will be processed and mailed out as soon as possible, but delivery by Christmas cannot be guaranteed.*

**Order online today: <http://www.newzoo.org/support/zoopass>**



## Animal Collection Report: November 2015, by Carmen Murach

A second American white pelican (*pictured below*) was added to the collection this month. He comes from a rehab facility in Northern Wisconsin. An eye injury makes him a poor candidate for re-release into the wild. Both pelicans are residing in the new Cornerstone Animal Hospital. Once they have completed quarantine, it is likely that they will be moved to the Tortoise building where visitors will be able to view them throughout the winter.



*Bubbles the pelican, above, prefers to eat his fish whole, rather than chopped, according to his zookeepers.*

A female red panda (*pictured above, right*) was transferred to the NEW Zoo from the Nashville Zoo in accordance with SSP recommendations. Qiji, a four year old female, arrived here on 11-19-15. She is currently residing in the exhibit adjacent to the one housing resident male Zhin-Li. The two will have time to get to know each other from a distance before they live together. We have high hopes that this “arranged marriage” will result in the birth of cubs in the summer of 2016. Red Pandas are critically endangered in the wild due to habitat degradation. The SSP captive breeding program is designed to ensure a genetically healthy and di-



*Qiji the red panda, above, was born at the Valley Zoo & John Janzen Nature Center in Alberta, Canada, to parents Pip and Ralphie. Photo by Monica Zeniuk.*

verse population in zoos. This carefully managed population can help ensure that the species does not become extinct.

The NEW Zoo animals have been benefitting from a WI DNR fish stocking program during the fall spawning season. Brown Trout, Coho Salmon, Chinook Salmon, and Steelhead (aka migratory Rainbow trout) climb a fish ladder (visible to the public through underwater viewing windows!) to the collection ponds at the Besadny Anadromous Fisheries Facility in Kewaunee (*below*). Once

the fish (who are at the end of their life span) have been processed to collect and fertilize eggs for the stocking program, they are donated to several zoos and wildlife sanctuaries. The bears, otters, eagle, and wolves are among the many zoo animals who REALLY appreciate this windfall! Learn more online at <http://dnr.wi.gov/topic/fishing/hatcheries/cdbesadny.html>

Zookeepers have been busy setting up heated water buckets and heat lamps and adding bedding and straw to exhibits as the cold weather arrives. Although most zoo animals have heated buildings available, many prefer to spend time outdoors where they can watch the visitors. Many warming features (like heated rockwork) are built into the exhibits, but others need to be provided seasonally.

Progress continues on the renovation of the animal kitchen building. Several walls have been removed to create a large open space for diet preparation. The animal-holding portion of the building is also being improved with the addition of windows to provide light for the inhabitants.





N.E.W.  
ZOOLOGICAL  
SOCIETY, INC.™

## N.E.W. Zoological Society News



*We Wish You a Happy Holiday Season!*



**We thought we would send our wish list requests to you and in turn you might fulfill your wishes too!!**



**Call the Society Store & Order By Phone @ 920-434-6814!**

**Your gift recipient will receive a holiday letter before Christmas if you place your order by December 15<sup>th</sup>!**

- 1) Buy 2 engraved bricks and receive a 3rd brick, of equal or lesser value free. This offer is good for the 4x8, 8x8, or the 8x8 clipart bricks. We can arrange your bricks in a group to display your family tree! The bricks are placed in a large stainless steel frame, in front of the Raccoon Exhibit located around the Deer yard.
- 2) Purchase an engraved, raised-arm basalt rock bench, or a granite garden bench, which includes up to 15 letters engraved, and we will throw in 2 tickets to our 4<sup>th</sup> annual "Skunks are Beautiful" Cribbage tournament, or 2 tickets to our 17<sup>th</sup> annual "Feast with the Beasts" event, presented by Capital Credit Union, free! Your bench will be placed in an area of your choice, at the zoo, with the approval of the Zoo Director.

**There are many other ways to lift your spirits and ours over the holiday season...**

**Purchase a plaque for that special someone on our Wall of Honor located in the Mayan Restaurant, buy a Memorial Marker for our Pet Memorial Garden, or make a donation as a gift in someone's name.**

**Your monetary or in-kind gifts will help support our wonderful zoo in the following ways:**

- \* Complete the Cornerstone Animal Hospital & Recovery Center*
- \* Continue Construction on the new Animal Diet Kitchen & Animal Holding Area*
- \* Help fund zoo staff & veterinarian training and seminars*
- \* Support Conservation Programs*

**The Society members would like to thank all of you who help us support our beautiful zoo.**

**We wish you a Safe, Healthy, and Merry Holiday Season!**

**Please contact the Society for information on our holiday specials or any of our programs at (920) 434-6814 or by mail to:**

**N.E.W. Zoological Society, Inc.  
P.O. Box 12647  
Green Bay, WI 54307-2647**

## From the Director and Everyone at the NEW Zoo



As 2015 draws to a close, we want to take a few minutes to say thank you to everyone who has supported the NEW Zoo & Adventure

Park over the year. We are grateful to our volunteers and interns who have dedicated time, resources, and efforts into making the zoo a better place for everyone—humans and animals alike! There are many things that happen at the zoo that we simply would not be able to accomplish without help from our volunteers.

We are also grateful for the many donors and sponsors who have given either money, specific items, or other in-kind donations to help the zoo achieve our goals. Every single donation that comes into our facility is always put to good use—and every single one is also greatly appreciated.

And for those of you who are members of the NEW Zoo family by way of either an annual Zoo Pass or Animal Adoption Membership—know that we are grateful for your support, too! We can only achieve our mis-

sion of education, conservation, and recreation with the help of people like all of you! *(and if you aren't a Zoo Pass or Animal Adoption Member yet, you can easily become one by visiting [www.newzoo.org](http://www.newzoo.org) and clicking on the SUPPORT tab!)*

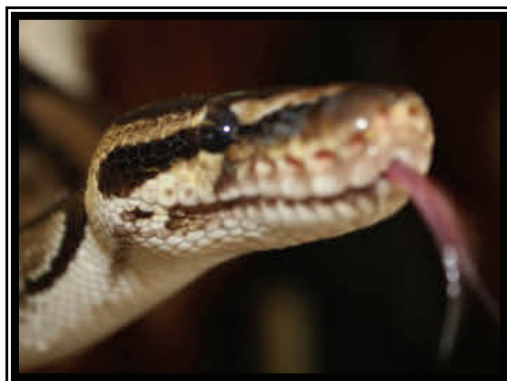
We are looking forward to 2016 and can't wait to share the exciting things we're sure the New Year will bring. So, as we head into the final stretch of the 2015 Holiday Season, know that we wish you all the best, and hope you can come out to visit the animals soon!

## Animal Adoption Holiday Special

### **\*Adopt a Snake & Get a Free Snake Painting\***

Did you know that the NEW Zoo is home to several different species of snakes? And nearly all of them are talented “animal artists!” That’s right, our snakes can paint! During the month of December, if you adopt any one of our snake species at the \$50 BFF level, you’ll receive a bonus painting created by one of our snake artists. Each painting will be a one-of-a-kind “masterpiece,” perfect for displaying in your home or at work. Colors will vary, but we guarantee that each one will be beautiful in its own way, just like the serpentine artist who created it. ;-)

You can complete your purchase of an Animal Adoption easily from our website, by visiting <http://newzoo.org/support/adoptions>. Don't forget that adoption packages make great gifts! In addition to the photograph, fact sheets, and certificate of adoption, each adoption package also comes with a FREE ticket to the zoo, along with a free Giraffe Feeding Coupon, as well.



## NEW Zoo & Adventure Park

4378 Reforestation Road  
Green Bay, WI 54313

Phone: 920-434-7841  
Fax: 920-434-4162  
E-mail: [info@newzoo.org](mailto:info@newzoo.org)



*Your NEW Zoo is an always new, natural adventure that promotes recreation, education, and conservation through encounters with live animals.*

*Want to know more about the WildTimes? Have a suggestion for an article you would like to see, or would you like to submit an article?*

*Contact the Editor, Angela, at 920-662-2405 or through email, at [education@newzoo.org](mailto:education@newzoo.org)!*

*We are your only AZA Accredited Zoo in Northeastern Wisconsin.*

**Join our online communities:**

**[Facebook.com/NEWZooGB](https://www.facebook.com/NEWZooGB)**

**[Instagram.com/NEWZooGB](https://www.instagram.com/NEWZooGB)**

**ASSOCIATION  
OF ZOOS &  
AQUARIUMS**

## Upcoming Events & Things to Remember...

### December 12th

*Breakfast with Santa (from 9:00 a.m. to 12:00 p.m.) and Holiday Fest. The NEW Zoo will be open from 9:00 a.m. to 4:00 p.m., with Santa available all day. FREE children's Activities to take place in the Education & Conservation Center from 10:00 a.m. to 3:00 p.m. Horse-drawn wagon rides through the woods available from 1:00 p.m. to 4:00 p.m. (weather permitting)*

### December 24th and 25th

*Christmas Eve and Christmas Day. The NEW Zoo will be open from 9:00 a.m. to 4:00 p.m.*

### December 31st

*New Year's Eve Day. The NEW Zoo will be open from 9:00 a.m. to 4:00 p.m.*

### January 1st

*New Year's Day. The NEW Zoo will be open from 9:00 a.m. to 4:00 p.m.*

### Starting January 1st

*Don't forget: HALF-PRICE ADMISSION will be available throughout the months of January and February.*

*The NEW Zoo will be open daily from 9:00 a.m. to 4:00 p.m.*